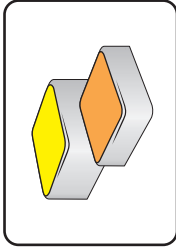


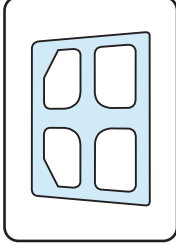
## How to set-up your **aero** laptop stand

### What you need for the installation



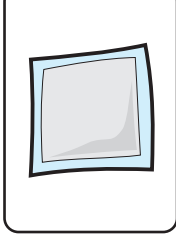
#### 1. Connectors

The Yellow Connectors secure your stand to the laptop while the Orange ones might only be



#### 2. Guiding sheet

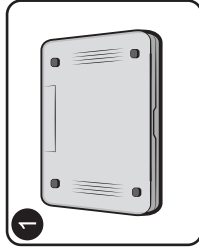
A guide to help you position the Connectors correctly onto the



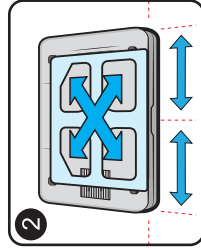
#### 3. Cleaning wipe

A wipe to clean the surface where the Connectors will be attached.

### Step 1 – prepare the laptop



1. Flip the laptop upside down, keeping the opening edge towards you.

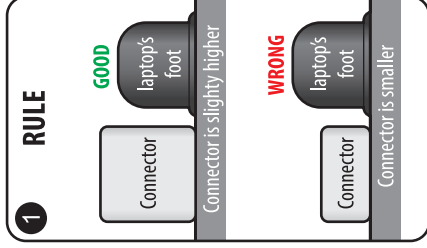


2. Centre the guiding sheet right/left and along the front edge of the laptop, as shown.

Find a clear location for the Connectors – one in each of the four cutouts and clean the area with the wipe provided.

For best results, keep the

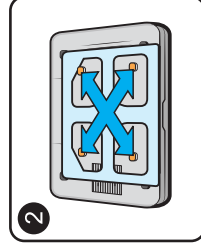
### Step 2 – apply the Connectors



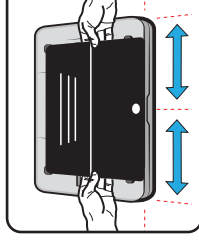
1. Ensure that each of the 4 Yellow Connectors are higher than the nearest laptop rubber foot.

If the Yellow Connector is too low then peel off one of the Orange Connectors and attach it to the Yellow Connector.

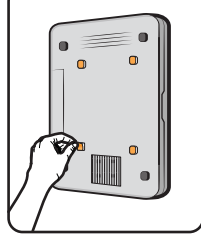
2. Once Connectors prepared, remove the coloured liner from one side to uncover the sticky surface and apply it to the clear location on the laptop. Press down for a few



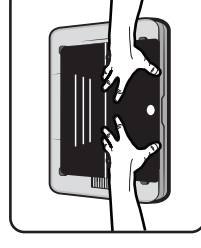
### Step 3 – attach the stand to the laptop



Simulate where the stand will be attached by centring the stand along the front edge of the laptop, with the white dot towards you.



Ensure the stand rests on the Connectors and not on the laptop's feet. Once you're confident where the stand will be attached, remove the remaining coloured liners from the Connectors, sticky side facing up.



Now align the stand and lower it